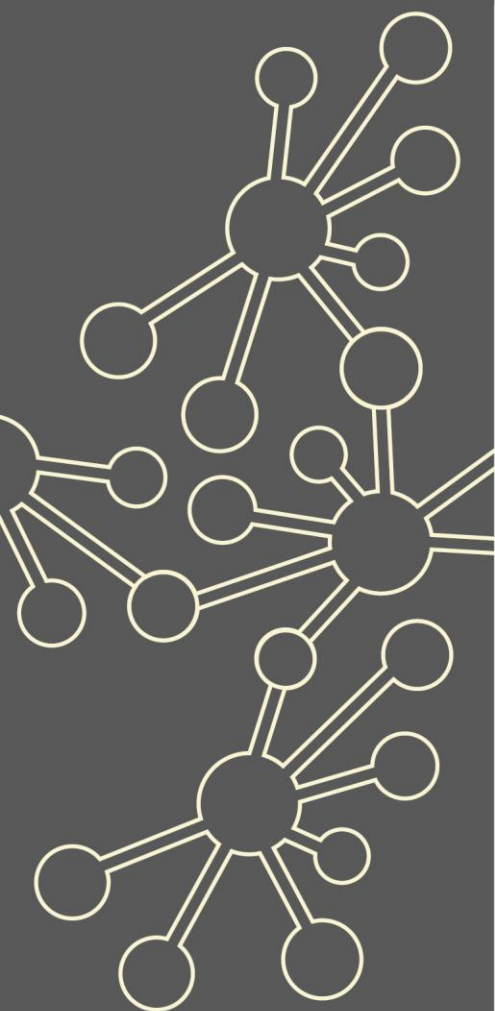


Developing A Level Pedagogy

Maths Hubs Network
Collaborative Projects
2021/22

NCP21-23



Working with
NCETM
NATIONAL CENTRE FOR EXCELLENCE
IN THE TEACHING OF MATHEMATICS

Outline

Primary focus for 2021/22: A level pedagogy to support Covid recovery

This project provides national support for the effective development of pedagogy in the teaching of A level Mathematics to support Covid recovery, to enhance the quality of teaching and the conceptual understanding of students, and the development of participants as leaders of A level teaching professional development in their own school or college. It aims to develop and sustain local communities of practice involving collaboration between teachers in developing pedagogy in their teaching of A level Maths.

This project involves a direct working partnership between the Maths Hubs Network and the Advanced Mathematics Support Programme



Details

What is involved

Four blended face-to-face/online sessions (taking place between 2.30 – 4.30 pm). Work Groups will be designed to meet the specific needs of the range of experience of participants. **Participants will be expected to attend all four sessions.**

There will be gap tasks and a commitment to sharing good practice and developing your skills. Participants will work collaboratively with colleagues from other schools and will be expected, where appropriate, to work with colleagues in their own department.

Who can take part?

The project is aimed at teachers in schools/colleges/departments that want to develop one or more aspects of their A level pedagogy to support Covid recovery. It would be suitable for existing leaders of A level teaching or experienced teachers of A level Maths who wish to lead the development of pedagogy in A level teaching with other colleagues in their own or other schools.

Teachers who will find this Work Group particularly useful include those who may have already completed other A level subject knowledge and pedagogy courses (such as Teaching A level Mathematics (TAM) or Preparing to Teach A level Mathematics), and who are able to work with other colleagues in their own or other schools.

What are the benefits?

Participants and their departments will:

- ✓ be better able to prepare lessons that meet the requirements of the A level (including the overarching themes and the use of technology) and support Covid recovery
- ✓ support colleagues in their own school/college in embedding themes from the Work Group
- ✓ be confident to teach aspects of the content (particularly mechanics and statistics)
- ✓ understand related pedagogical approaches to support Covid recovery.

What is the cost?

The Developing A Level Pedagogy project is **fully funded** by the Maths Hubs Programme and the AMSP so is **free to participating schools and colleges**. *See Terms and Conditions of booking

Covid-19 Recovery

Many positive lessons were learnt from online collaboration during Maths Hubs activity in 2020/21. These will be built upon in 2021/22.

As the impact of the pandemic hopefully recedes, the result for Maths Hubs work will be a blend of face-to-face activities and frequent online collaboration.



The wider context

There is a range of currently available maths teacher professional development around subject knowledge and pedagogy for new teachers of A level Maths via the AMSP, but no extended professional development for experienced teachers or leaders of A level Maths teaching around the overarching themes, technology or other aspects of pedagogy of the A level Maths specification. There is a strong focus on pedagogy through the overarching themes of the linear A level Maths specification, with changes to pedagogy in statistics teaching, assessment and expectations in the use of technology.

The impact of the pandemic from March 2020 to date in terms of school closures and variable access to remote teaching requires a strong focus on high quality teaching in the Covid recovery period.

Expectations of participants and their schools

***Schools/colleges must be able to commit to the full academic year's programme.**

This includes attendance and active participation in the blended mix of four face-to-face/online sessions across the academic year, as well as classroom and school-based activities. School/college leadership must support participants to explore the outcomes from the project with other colleagues in their department. See information for Headteacher/Principal below.

Further Information

About the Hub

Boolean Maths Hub works with schools & colleges to support the continuous improvement of mathematics education for all students in the following local authority districts: Bath & North East Somerset, Bristol, South Gloucestershire, North Somerset and Somerset. The Maths Hubs Programme is funded by the DfE and coordinated by the National Centre for Excellence in the Teaching of Mathematics.

Information for the Headteacher/Principal - *Terms and Conditions of Booking

Schools/colleges must be able to commit to the full academic year's programme. This includes attendance and active participation in the blended mix of four face-to-face/online sessions across the academic year, as well as classroom and school-based activities. School/college leadership must support participants to attend all sessions and, unless there are exceptional circumstances, non-attendance and/or Work Group tasks not being completed may result in a charge to the school/college of £100.

What is a Work Group? [Click here to find out](#)

Work Group locations/dates

Work Group sessions will be a blended mix of online and face-to-face. The four sessions will start in October 2021 and will run through to January/February 2022. Each session will take place between 2.30 and 4.30 pm. (Dates to be confirmed)

Work Group Lead information - Ieuan Pearse (Assistant Maths Hub Lead – Level 3)

To book your place on this Work Group follow the link [HERE](#)

For further information please email booleanmathshub@clf.cabot.ac.uk

